

# HEROWINS

**PARTICIPATION**  
for  
**PREPAREDNESS**



**ISSUE**

**4**



## PROMOTING EQUALITY FOR ALL

“The real point is that if you really want peace and security to be a real thing that is visible in our communities or even our families we’ve got to get the spaces for women”

## PEACE & SECURITY

“It’s not just about the elimination of violence against women, it’s also about looking at the root causes of violence against women in terms of women’s human security first and what women have been talking about is not just being victims of violence but that opportunity for them to talk and share their story in terms of addressing the root causes”



## DISABILITY RIGHTS

“Persons living with disability are sometimes...not able to express our views in front of many people and then we (feel) isolated so when we work in partnership that’s where we get different people’s views and ideas and by listening”

## EQUALITY IN DECISION MAKING

“The inclusion of women is very important. Women need to tell their stories; they need to come out and let the government know this is what is happening in our community. These are the solutions for communities.”



## PROTECTION WITH DIGNITY

“Women do not have time to rest, especially because natural disasters like TC Winston, floods and even drought.”

## ACCESSIBLE INFORMATION

“The key method of sharing information is the radio (because)... at the end of the day it is means to reach out to communities so... it is an actual, genuine means of reaching out to people... to get the people in the community involved... And you can be part of the knowledge sharing and the voices that are heard.”

IT'S TIME FOR ANOTHER  
EXCITING EPISODE OF  
HEROWINS!

HEROWINS

GO HEROWINS!

WOOOO!

THOSE HEROWINS  
CERTAINLY ARE  
POWERFUL WOMEN!

THEY'RE SO COOL! MY  
FAVOURITE PART IS WHEN  
THEY **COMBINE** THEIR  
POWERS!

LIKE WHEN WE MOBILISE  
WITH **WOMEN'S WEATHER  
WATCH** WE'RE CONNECTING  
COMMUNITIES.

YEAH!

BUT, SOMETIMES IT  
STILL FEELS LIKE WE'RE  
JUST VULNERABLE... NOT  
LEADERS.

WE HAVE TO BE  
RESILIENT, INFORMED AND  
EMPOWERED!

WELL, YOU ALL ARE  
HEROWINS IN YOUR  
COMMUNITIES!

PREPAREDNESS  
IS KEY!

# Tsunami Alert!



## What is a tsunami?

The term tsunami comes from two Japanese words that mean "harbor" and "wave." The effects of a tsunami include loss of human and animal life, devastating property damage, severe flooding and disease. There are also environmental effects such as contamination of soil and water, a permanent change to the landscape, solid waste and disaster debris, and hazardous materials and toxic substances

**KNOW THE SAFE ZONES FOR YOUR FAMILY, SCHOOL, CHURCH, WORKPLACE & ANY OTHER FREQUENTLY VISITED PLACES**

## PLAN WITH YOUR FAMILY



**Protect yourself, your family and your property from the effects of a tsunami:**

To begin preparing, you should build an emergency kit and make a family communications plan.

Talk to everyone in your household about what to do if a tsunami occurs.

Create and practice an evacuation plan for your family.

Familiarity may save your life.

Be able to follow your escape route at night and during bad weather. Practicing your plan makes the appropriate response more of a reaction, requiring less thinking during an actual emergency.

- Know whether your child's school has a tsunami evacuation plan.
- Be aware telephone lines during a tsunami alert may be overloaded and routes to and from schools may be jammed.
- Knowing your community's warning systems and disaster plans, including evacuation routes.
- If you are a tourist, familiarize yourself with local tsunami evacuation protocols.
- If you are concerned that you will not be able to reach a safe place in time, ask your local emergency management office about vertical evacuation.
- Some strong (e.g., reinforced concrete) and tall buildings may be able to provide protection if no other options are available.
- If an earthquake occurs and you are in a coastal area, turn on your radio to learn if there is a tsunami warning.

**WALK  
DON'T  
DRIVE**



## During a tsunami:

- Follow the evacuation order issued by authorities and evacuate immediately.
- Take your animals with you.
- Move to high ground or inland and away from water immediately.
- Stay away from the beach. Never go down to the beach to watch a tsunami come in.
- If you can see the wave you are too close to escape it.

**CAUTION** - If there is noticeable recession in water away from the shoreline this is nature's tsunami warning and it should be heeded. You should move away immediately.

- Save yourself - not your possessions.
- Remember to help your neighbors who may require special assistance - infants, elderly people, and individuals with access or functional needs.

Your safety zone should be more than 25 metres above sea level

Your safety zone is more than 1 mile away from the shore

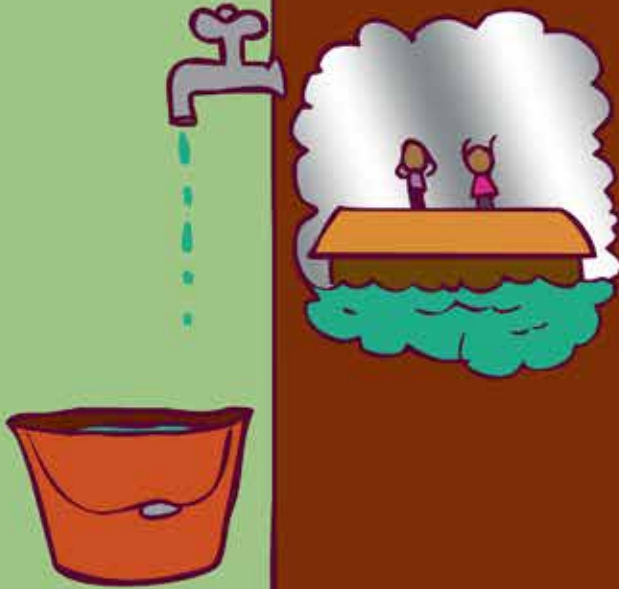


**Women leaders must be recognised as information and communication connectors! In addition to designing and managing disaster preparedness they must also be supported to communicate preparedness messages through their families and community networks.**

# WATER IS PRECIOUS BUT...

SOMETIMES THERE ISN'T ENOUGH

AND SOMETIMES THERE IS TOO MUCH!



# COMMUNICATION

SMS MESSAGING

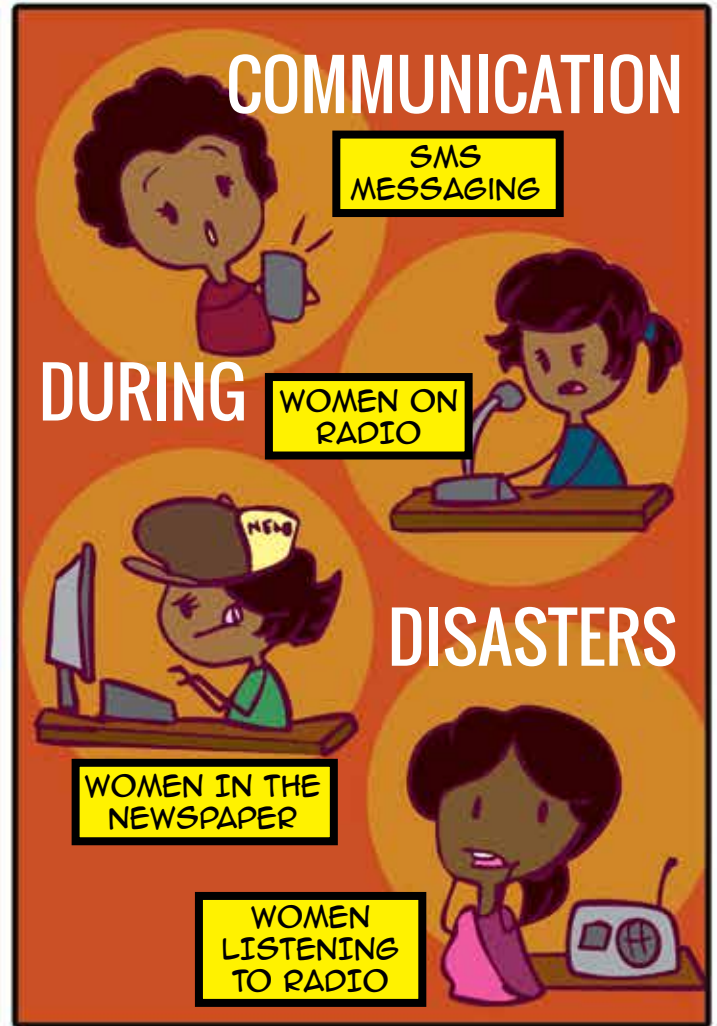
DURING

WOMEN ON RADIO

DISASTERS

WOMEN IN THE NEWSPAPER

WOMEN LISTENING TO RADIO



# HAVE A PLAN FOR YOUR FAMILY & COMMUNITY

- FOOD SECURITY
- WATER STORAGE & MANAGEMENT
- HEALTH SECURITY
- HAVE AN EVACUATION PLAN IN CASE OF FLOODING



ENSURE WATER MANAGEMENT COMMITTEES & FORUMS INCLUDE WOMEN OF ALL DIVERSITIES



# Preparing for Storms, Cyclones and Hurricanes

## INFORMATION

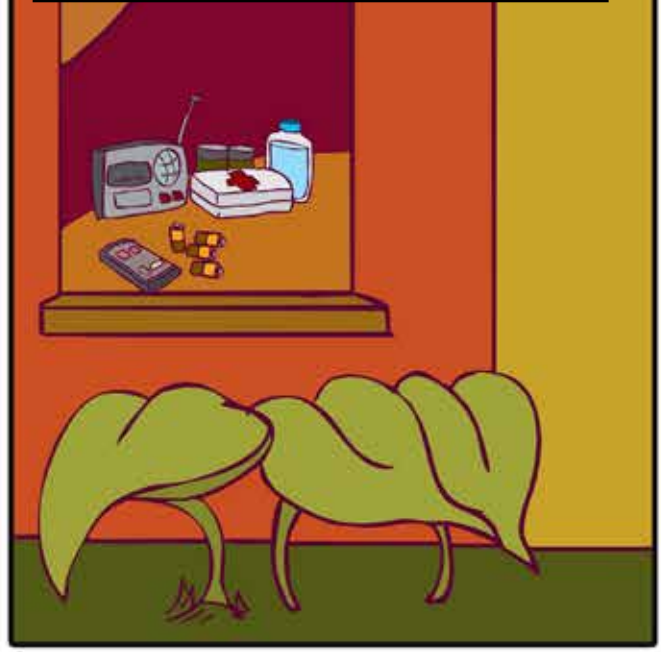


During cyclone season information is vital

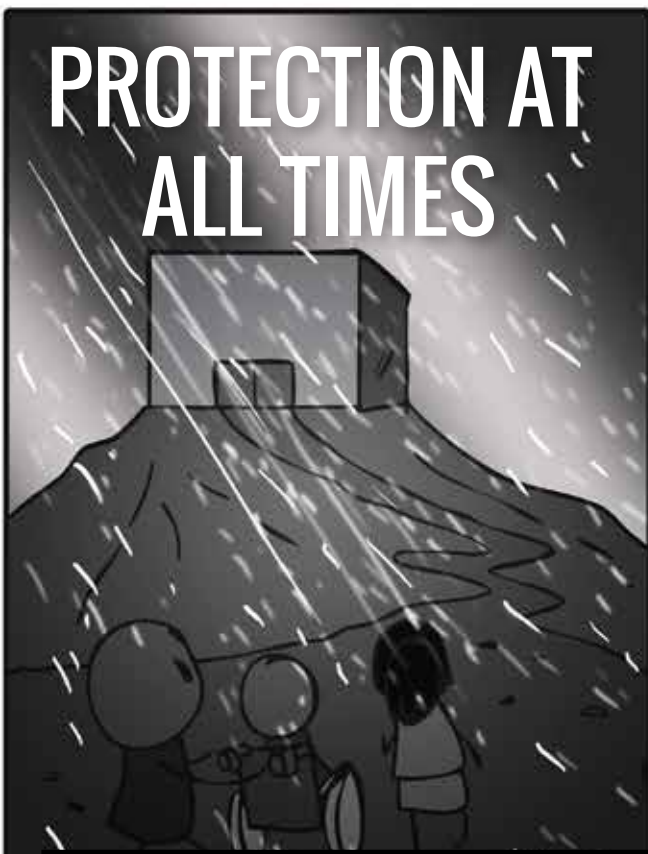


## AT HOME

Food security for your family means planning your home gardens to ensure the availability of vegetables and fruit which can be harvested and stored easily

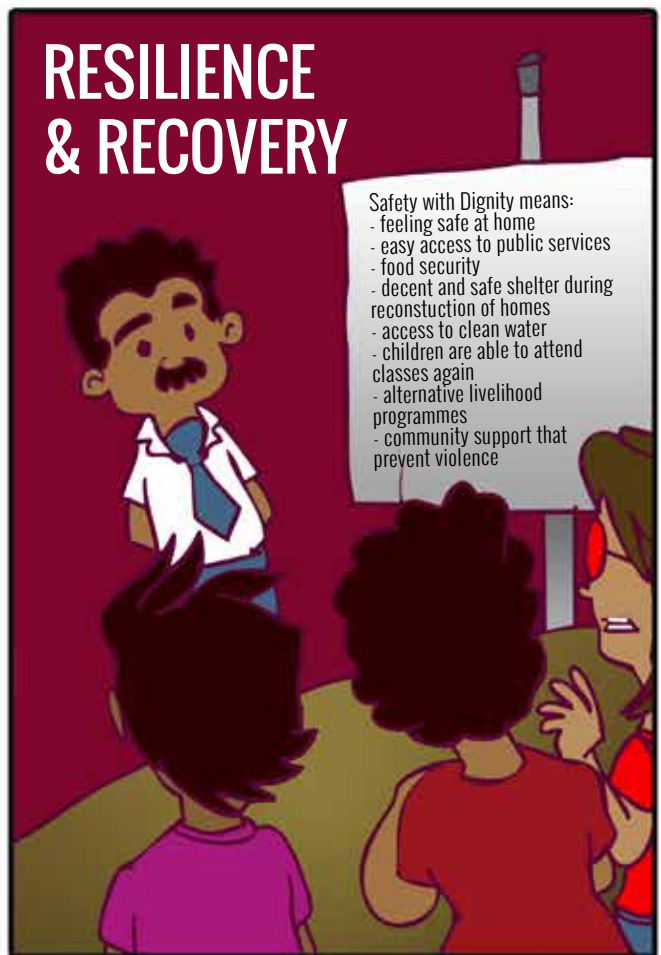


## PROTECTION AT ALL TIMES



Human security recognises that vulnerable people are exposed to a constant series of threats especially during natural disasters

## RESILIENCE & RECOVERY





# Recommendations

---



## **Preparedness:**

Women must be involved in:

All disaster management, preparedness and response programmes and committees, including determining the location, management and coordination of evacuation centres to make sure they are accessible to everyone.

Ensuring the availability and management of food rations because too often they will not eat, but store the food for their children and other family members.

Ensure the availability of sex and gender disaggregated data to prepare for natural disasters and to ensure the appropriate assistance in the immediate and long term aftermath

Recognise the reality of women-led households and their role in organising their families and communities, including the preparedness of evacuation systems, by identifying women leaders within communities and establishing strong communication links to provide them with information

Improve Public Emergency Broadcasts and early warning systems to include community media/radio models so they can provide hourly weather updates that contain vital localised information

Support FemLINKPACIFIC, as the already established and reliable information provider, in the expansion of women-led rural community media/radio hubs, operating community media centres which can also be referral points and safe spaces for women and girls.



## **Protection:**

Integrate UNSCR1325 in the national security policy as well as National Disaster Management Strategy in order to demonstrate collaboration and model best practice Support local women leaders to:

- a) provide and manage gender sensitization training for local committees
- b) assess and communicate family and community priorities

Ensure that:

- a) the selection of evacuation centres is done in consultation with women to ensure their safety and protection
- a) security mechanisms are established in communities and in evacuation centres.



## **Recovery Plans should**

Ensure agricultural extension programmes for women that allocate 30% of participant places to young women aged 18 - 35 years

Ensure women's access to land and training to establish and manage community garden projects in each district

Shelter Cluster strategies must include women in research, planning, design and construction of homes

Involve women in water harvesting and storage, including underground tanks

Establish solar power access and ICT hubs led by women in each community

---

FemLINKpacific continues to campaign for the inclusion of women in all aspects of disaster preparedness, response and recovery.

We are calling for greater compliance of UN Security Council Resolution 1325 and 2242 (Women, Peace and Security) in humanitarian action so that disaster responses do not cause conflicts and also ensure gender inclusive human security.

The Women's Weather Watch campaign also demonstrates the vital role of community media, especially community radio, to communicate weather patterns and warnings to women in rural and remote communities as well as disability and SOGI rights networks.

---



# the **HEROWINS** say be

## **PROTECTED**

Ensure the needs of Pacific people in all their diversities are taken into account. That means men and women, boys and girls, persons with disabilities and persons of diverse sexual orientation and gender identity. Everyone has the right to protection and human security with dignity

## **PREPARED**

There should be appropriate, accessible and reliable information as well as equitable representation and active participation of women leaders in disaster management

## **RESILIENT**

Support women's networks to organise women leaders, activists and organisations in order to devise and communicate key recommendations that will enhance women's leadership and resilience. That will ensure a gender inclusive humanitarian agenda!

Produced with the assistance of



Australian Government

Department of Foreign Affairs and Trade

In association with

**act:onaid**

**iwda**  
international  
women's development  
agency inc.



FemLINKpacific is a feminist media organisation founded on fundamental and universally recognized human rights and freedoms, specifically the principle that all persons, especially women, should be treated equally regardless of actual or supposed personal characteristics including (but not limited to) gender, age, ethnicity, religion, sexual orientation, primary language, disability, economic status, family status or opinion